

SCALES FOR IMPROVISATION

MT. SAN ANTONIO COLLEGE

C MAJ7



BASIC MAJOR SCALE: TO BE USED ON MAJOR CHORDS

C7



MIXOLYDIAN SCALE: TO CONSTRUCT A MIXOLYDIAN SCALE-TAKE A MAJOR SCALE AND LOWER THE 7TH DEGREE OF THE SCALE BY A 1/2 STEP.

OR CAN BE THOUGHT OF AS THE 5TH DEGREE OF A MAJOR SCALE (I.E. C7 MIXOLYDIAN SHARES THE SAME KEY SIGNATURE AS A F MAJOR SCALE)

C MIN7



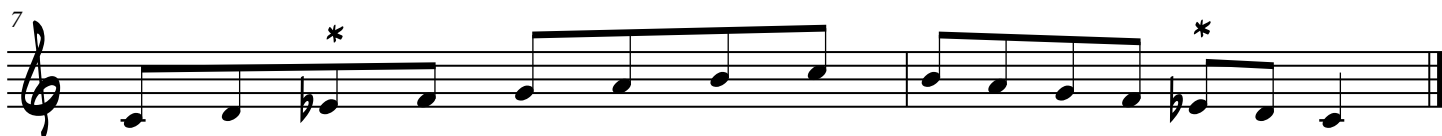
DORIAN SCALE: TO CONSTRUCT A DORIAN SCALE-TAKE A MAJOR SCALE AND LOWER THE 3RD & 7TH DEGREE BY A 1/2 STEP

OR CAN BE THOUGHT OF AS THE 2ND DEGREE OF A MAJOR SCALE (I.E. CMI7 DORIAN SHARES THE SAME KEY SIGNATURE AS A BFLAT MAJOR SCALE)

C M(MAJ7)

A δ 7

B 7#9



JAZZ MELODIC MINOR SCALE: TO CONSTRUCT A MELODIC MINOR SCALE-TAKE A MAJOR SCALE AND LOWER THE 3RD DEGREE A 1/2 STEP

THE MELODIC MINOR SCALE IS ONE OF THE MOST USEFUL SCALES IN JAZZ IMPROVISATION